



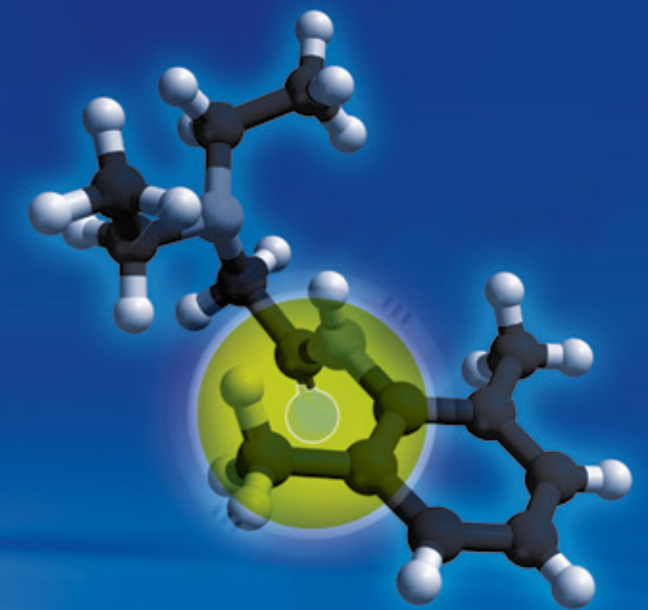
STERILE R CE 0473



optiLubeTM
active
sterile lubricating jelly

FREQUENTLY ASKED QUESTIONS ON OPTILUBE ACTIVE

- 1. What is OptiLube Active?**
OptiLube Active is a sterile lubricant gel which contains a local anaesthetic (Lidocaine) and antiseptic agent (Chlorhexidine).
- 2. What can OptiLube Active be used for?**
OptiLube Active is used to make the insertion of a tube into a body cavity as smooth, sterile and painless as possible. It is frequently used for catheter insertion, cystoscopy, intra-uterine device insertion, hysteroscopy, naso-gastric tube insertion, proctoscopy, sigmoidoscopy and colonoscopy and during other operative procedures.
- 3. How is OptiLube Active used?**
OptiLube Active is inserted into the mucosal orifice using the pre-filled syringe. It can be used for naso-gastric tube insertion but should not be inserted into the mouth. Ingestion of small amounts is unlikely to cause any side effects, apart from numbing of the mouth and tongue, but large doses could cause systemic side effects of lidocaine. It should not be used in the eyes. If OptiLube Active comes into contact with eyes wash thoroughly. No lasting complications following contact with OptiLube Active to the eyes have been reported. Always read instructions before use.
- 4. How long does OptiLube Active take to act?**
The anaesthetic takes just 3-5 minutes to work.
- 5. Will the patient experience any discomfort from using OptiLube Active?**
The local anaesthetic makes the procedure as comfortable for the patient as possible. Prior to this taking effect the patient may experience mild tingling or stinging sensation. This quickly subsides as the local anaesthetic takes effect.
- 6. How long do the OptiLube Active local anaesthetic properties work for?**
The anaesthetic effect generally remove would lasts approximately 30 minutes in the urethra and cervix.
- 7. Can OptiLube Active syringe be used more than once?**
Each syringe should only be used for one patient. The pre-filled syringes come in 2 sizes to suit the prospective clinical procedure and reduce unnecessary wastage. OptiLube Active comes in a 6ml and a 11ml pre-filled syringe.
- 8. Can more than one pre-filled syringe of OptiLube Active be used on a single patient?**
Yes, but in practice this is rarely necessary due to the efficiency of OptiLube Active product. If re-application of OptiLube Active is required, it is recommended that a period of 3 hours in between applications is allowed to prevent accumulation of lidocaine in the blood. This is because the half life of lidocaine in the blood is 3 hours.
- 9. Is there any latex in OptiLube Active?**
No. The syringe, OptiLube Active and the rubber nozzle are all latex free and hypoallergenic.
- 10. Can OptiLube Active be used in women that are breast feeding?**
Yes, and the woman can continue to breast feed.
- 11. Can OptiLube Active be used in pregnant women?**
Tell the clinician preparing to use the gel if you are or think you might be pregnant. It can be dangerous to the unborn baby if used at high doses and is generally avoided in pregnancy. The clinician will need to weigh up the risks and benefits for each individual person.
- 12. Is OptiLube packaging recyclable?**
Yes, OptiLube Active is supplied in cardboard boxing. This is recyclable. We are currently investigating making the individual syringe packaging fully recyclable, we will keep you updated.



- LUBRICANT
- ANAESTHETIC
- ANTISEPTIC



optimum medical solutions

Head office: 47 Park Square East • Leeds • LS1 2NL • United Kingdom
Tel.: 0845 6435479 • Fax: +44 (0) 1142 383 826 • enquiries@optimummedical.co.uk
www.optimummedical.co.uk

Company Registration No. 6779883



optimum medical solutions



optiLubeTM active

sterile lubricating jelly
with Lidocaine

OptiLube Active is a sterile lubricant gel containing local anaesthetic (Lidocaine) and antiseptics (Chlorhexidine), with each syringe presented in a sterile package. OptiLube Active is available in both 6ml and 11ml syringes.

OptiLube Active is used for the insertion of catheters and instruments into the body cavity.

The gel provides optimum lubrication, whilst the local anaesthetic prevents pain and the antiseptic properties reduce the risk of infection.

6ml e

11ml e

STERILE R

CE 0473

HOW TO USE THE OPTILUBE ACTIVE STERILE LUBRICATING JELLY FOR URETHRAL CATHETERISATION USING ASEPTIC TECHNIQUE

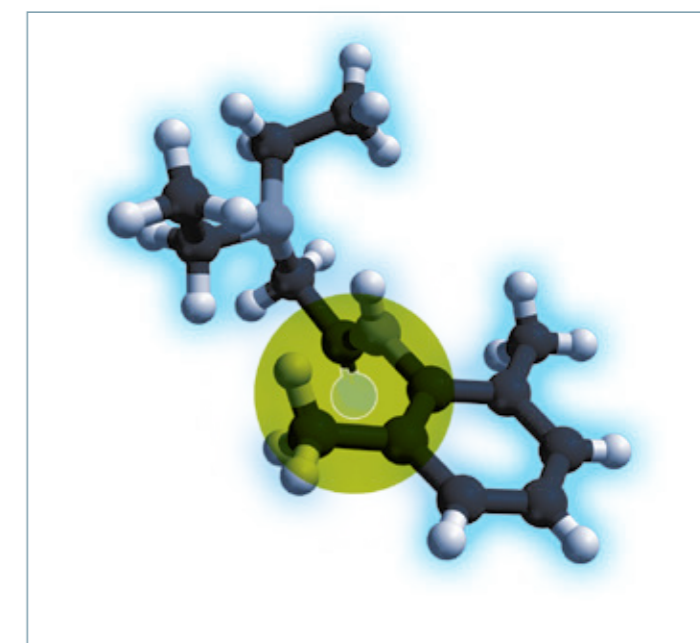
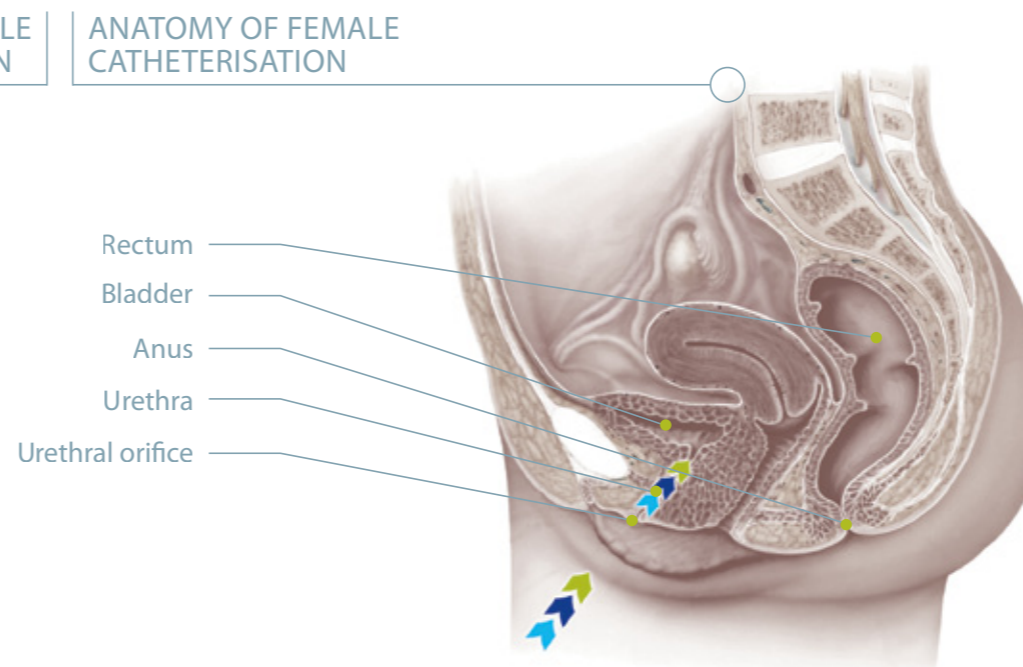
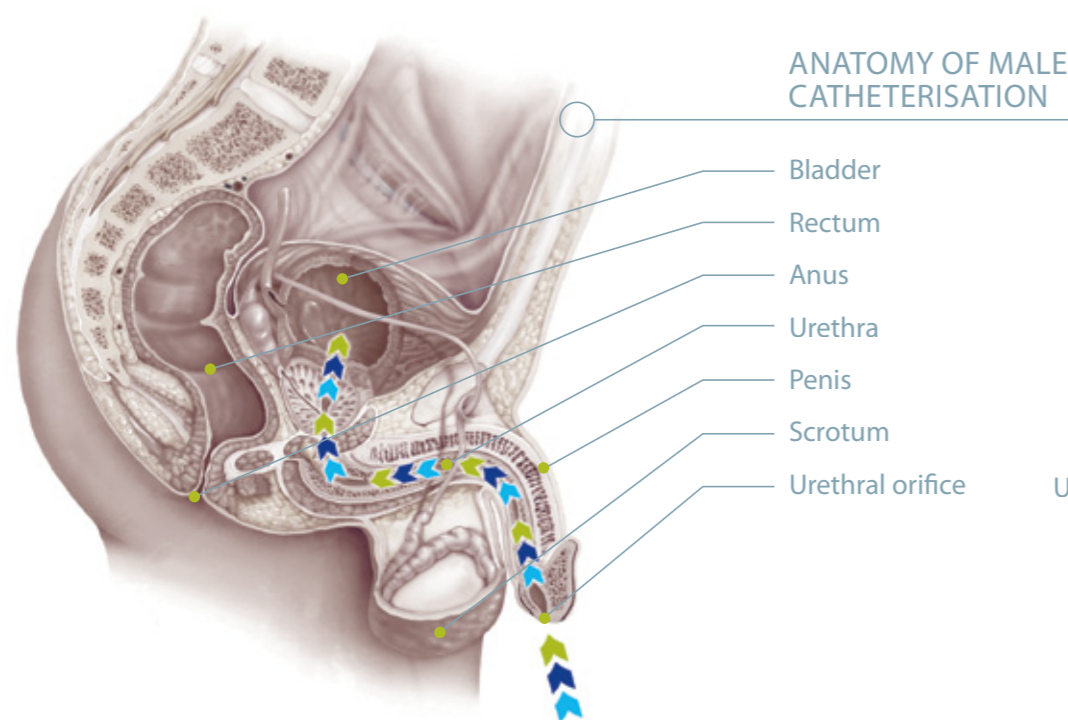
- Remove syringe from sterile pouch by tearing away the backing paper.
- Gently press the plunger on the end of the syringe.
- Remove the blue cap.
- Apply a small amount of OptiLube Active around the urethral opening.
- Gently insert the nozzle into the urethra.
- Apply even pressure to the syringe, slowly releasing the lubricant gel in an equal flow.
- OptiLube Active will fill and numb the urethra.
- Leave for five minutes for the local anaesthetic to take effect; insert the catheter.

WHAT CAN I USE OPTILUBE ACTIVE FOR

- Urethral and suprapubic catheterisation
- Cytoscopy
- Intra-uterine sterile insertion
- Gynaecological investigations
- Rectal examinations and investigations

Composition (in each 100g)

Lidocaine Hydrochloride	2.000g
Chlorhexidine Gluconate	0.250g
Methyl Hydroxybenzoate	0.060g
Propyl Hydroxybenzoate	0.025g
Hydroxethylcellulose	
Propylene Glycol, Purified Water	



model of the lidocaine molecule, as found in the crystalline state

LUBRICANT

ANTISEPTIC

ANAESTHETIC